



TECHNICAL DATA BULLETIN

PRODUCT TECHNICAL INFORMATION AND APPLICATION

ABAMECK 18EC (Abamectin 18 g/L)

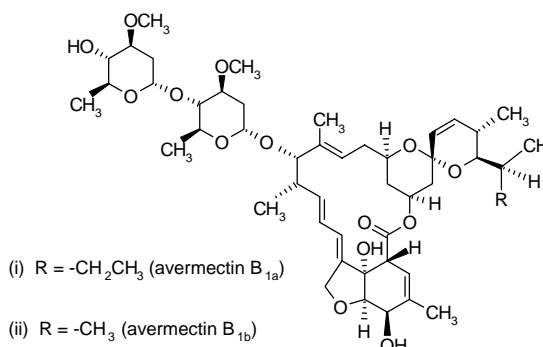
1. INTRODUCTION

AbaMeck 18EC is an emulsifiable concentrate insecticide / acaricide formulation containing 18 g / L of the active ingredient Abamectin. It is used in a large number of agricultural crops and ornamental plants.

2. ACTIVE INGREDIENT

| | |
|--------------------|--|
| Common Name: | Abamectin |
| CAS Registry No: | 71751-41-2 |
| Molecular Formula: | C ₄₈ H ₇₂ O ₁₄ for Avermectin B _{1a} C ₄₇ H ₇₀ O ₁₄ for Avermectin B _{1b} |
| Molecular Weight: | 873.1 for Avermectin B _{1a} 860.1 for Avermectin B _{1b} |

Chemical structure:



Vapour Pressure: <math>< 2 \times 10^{-4}</math> mPa

Acute, Oral LD₅₀ for rat: 10 mg/Kg



Abamectin is a natural product containing macrocyclic lactone glycoside. It is isolated from the fermentation of *Streptomyces avermitilis*.

3. PHYSIOCHEMICAL PROPERTIES

| | |
|---|---|
| Appearance | : light brown liquid free of visible impurities |
| Odour | : Characteristic |
| Assay (g/L) | : 18 2.7 |
| Density (Kg/L) | : 1.0268 - 1.0486 |
| Acidity as H ₂ SO ₄ (% w/w) | : 0.0039 |
| Water contents (% w/w) | : 0.3 |
| Flash Point | : >60 C |

4. MODE OF ACTION

AbaMeck 18EC is an acaricide and Insecticide with contact and stomach action. It is primarily active as a foliar ingested toxicant. It has a limited systemic activity on the plant and exhibits translaminar movement on the leaves.

5. USES

AbaMeck 18EC is used for the control of mites (Tetranychid, Eriophyid and Tarsonemid), Agromyzid leafminers (*Liriomyza spp.*), pear psylla (*Psylla pyricola*), tomato pinworm (*Keiferia lycopersicella*), diamondblack moth (*Plutelia xylostella*) and fire ant (*Solenopsis invicta*). It is used in a number of crops and ornamental plants including tomatoes, lettuce, peppers, cucurbits, potatoes, strawberries, water melon, sweet melon, apples, pears, citrus, almonds, cotton, protected flowers and ornamentals.

AbaMeck 18EC has no detrimental effect to beneficial hymenopterous leafminer parasites. Thus, it is recommended as a key component for used in integrated pest management programs.

6. APPLICATIONS

AbaMeck 18EC is applied as a foliar spray after being diluted with water. It is applied when insects or mites appear and repeated if necessary on 7 - 10 days schedule.



AbaMeck 18EC is applied at the rate of 5.6 - 28 g ai/ha (0.3 - 1.6 L/ha) for mite control and 11 to 22 g/ha (0.6-1.22 L/ha) for the control of leaf miner. The exact application rate and spray interval, depend on the target pest and the crop to be treated. The following table can be considered as a general guide for the application of **AbaMeck 18EC**.

Recommendations for Use

| Crop | Pests | Application Rate |
|--|--|--|
| Vegetable Crops: | | |
| Tomatoes, cucumber, squash, pepper and lettuce | Two-spotted spider mite and leaf miners. | 40 ml/100 L of water <ul style="list-style-type: none"> - Do not spray more than four times during one season - Consecutive spraying is limited to two sprays only. |
| Fruits Trees: | | |
| Citrus and pears | Pear Psylla | 50 ml/100 L of water |
| | Two-spotted spider mite, rust mite and red flat mite | 20 - 30 ml/100 L of water |
| Straw berries | Red Spider mites | 0.6 - 1.2 L/ha <ul style="list-style-type: none"> - Use 500 L of spray solution / ha. - Do not spray one crop more than four times. - Consecutive spraying is limited to two sprays only |
| Melons and Watermelon and. | Two – spotted spider mite and leafminers | 40 ml/100 L of water |
| Ornamental plants | Leaf miner | 50 ml/100 L of water |
| | Two-spotted spider mite | 25 ml/100 L of water |

For effective control the following notes should be considered:

- Spray treatment has to be carried out at the first sign of infestation.
- Spraying has to be repeated when required.
- Total cover of plan surface is essential. Run-off should be avoided.
- 3-5 days may be required for maximum effect.
- Maximum concentration of spray solution should not exceed 50 ml/100 L
- AbaMeck 18EC** can be used in combination with a minimum of 0.25% paraffinic oil to control nymphal population of mites.



7. PHYTOTOXICITY

AbaMeck 18EC non-phytotoxic when used as recommended. However, the product should not be used on ferns and some spotting or staining may occur on carnation, kalanchoe and begonia foliage.

8. COMPATIBILITY

AbaMeck 18EC can be tank mixed with other pesticide. However, for new mixtures a small-scale trial mix should be carried out and tested before large- scale application.

9. PRE-HARVEST INTERVAL

The Pre-harvest interval ranges between 7-10 days depending on the treated crop.

10. HANDLING, STORAGE AND TRANSPORTATION

AbaMeck 18EC should be transported and stored in clearly labeled original containers, under lock and key secured from access by unauthorized persons and children. No food or drink should be stored in the same compartment. Full protective clothing, including impermeable boots, clean overalls, gloves and respirators should be provided for all personnel handling this product.