



TECHNICAL DATA BULLETIN

PRODUCT TECHNICAL INFORMATION AND APPLICATIONS

ALPHACIDE[®] 50 EC

“ALPHA-CYPERMETHRIN 5%“

1 INTRODUCTION:

Alphacide 50 EC is an emulsifiable concentrate formulation of the synthetic pyrethroid Alpha-Cypermethrin. It contains 50 g/L of the active material. Alphacide 50 EC is used as an insecticide for the control of a wide range of insect pests in agriculture.

2 ACTIVE INGREDIENT:

Common name

Alpha-Cypermethrin

Chemical Group

Pyrethroid

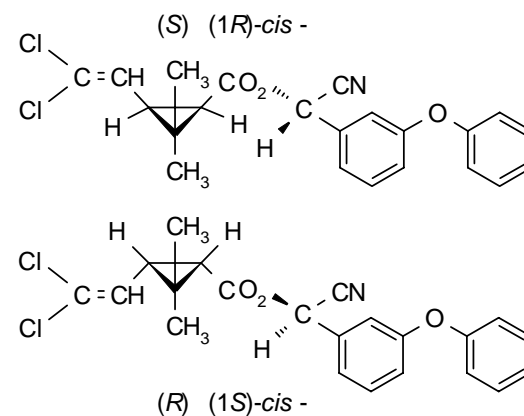
CAS Registry No.

67375-30-8

Molecular Formula

$C_{22}H_{19}Cl_2NO_3$

Structural Formula



Molecular weight

416.3

Vapour Pressure

2.3×10^{-2} mPa (20°C)

K_{ow} log P

6.94 (pH 7)

Acute oral LD₅₀, Male rat

79 - 400 mg/kg



3 PHYSICOCHEMICAL PROPERTIES:

Assay:	50 ± 3 g/L
Appearance	Clear light yellow liquid free of visible impurities
Odour	Slightly aromatic
Density	0.897 g/ml
Flash Point	41.2°C
Water contents	< 2.0 g/Kg
Acidity as H ₂ SO ₄	< 0.5 g/Kg

4 MODE OF ACTION:

Alphacide 50 EC contains the active ingredient Alpha-Cypermethrin which is a broad spectrum non-systemic pyrethroid insecticide with contact and stomach action. It acts on the central and peripheral nervous system at very low doses.

Alphacide 50 EC is a fast acting broad spectrum insecticide with an ovicidal activity. It has an excellent stability on the plant. It is also resistant to rain wash-off.

5 USES:

Alphacide 50 EC is used for the control of a wide range of insect pests including chewing and sucking insects in a large number of crops such as vegetables, cereals, cotton and forestry plants. The important pests controlled are boll worms, cutworms, armyworms, leaf miners, fruit flies, aphids, scales, white flies, weevils, beetles, loppers and others.



6 APPLICATION:

Alphacide 50 EC is applied when the insects appear and repeated as necessary. It is applied as a foliar spray after being diluted in water. Alphacide 50 EC is recommended to be applied at the rate of 5 – 30 g a.i./ha i.e. 0.1 – 0.6 L product/ha. The table below can be used as a guide for application :

Application Rate

Crop	Target Pest/s	Application Rate
Vegetable Crops: Tomato, Cucumber, pepper, water melon and cabbage	Cut worms, army worms, boll worms, cabbage moth,, aphids, white-flies, leaf miner, thrips and flee beetle	30 - 50 ml/100 L of water or 300 ml / ha
Fruits Crops: Citrus trees, pome, olive and stone fruits.	Apple aphid, fruit moths, Mediterranean fruits fly, scales, cut worms and white flies	30 – 60 ml/100 L of water or 350 ml / ha
Field Crops: Wheat, barley, alfalfa and other forage crops	Cut worms, suni bug, European corn borer and boll worms	300 - 400 ml/ha
Grapes	Mealy bugs, green leafhopper and grape berry moths	30 ml/100 L of water
Potatoes	Potato tuber moth, leaf miners and aphids	400 ml/ha
Date Palms	Dubas bug	40 ml / 100 L of water

7 PHYTOTOXICITY:

Alphacide 50 EC is not phytotoxic when used as directed.

8 COMPATIBILITY:

Alphacide 50 EC is compatible with many pesticides. However, a small test for compatibility has to be carried out before mixing in large quantities.



9 WITHHOLDING PERIOD:

Varies with the crop (from 7 – 14 days). For details please refer to the product label.

10 HANDLING, STORAGE AND TRANSPORTATION:

Alphacide 50EC should be transported its original labeled, tightly closed container and stored in a dry well ventilated store at room temperature and away from direct sunlight. It should also be kept away from children, animals, food, feed and drinks and unauthorized personnel. Personnel involved in handling this material should wear protective gloves, clean protective clothing and a facemask.