



TECHNICAL DATA BULLETIN

PRODUCT TECHNICAL INFORMATION AND APPLICATIONS

LAMDOC[®] 50EC

(LAMBDA-CYHALOTHRIN 5%)

1. INTRODUCTION:

Lamdoc[®] 50EC is an emulsifiable concentrate pyrethroid insecticide formulation containing 50 g/L of lambda-Cyhalothrin. It is used for the control of various insect pests on several crops.

2. ACTIVE INGREDIENT:

Common name

Chemical Group

CAS Registry No.

Molecular Formula

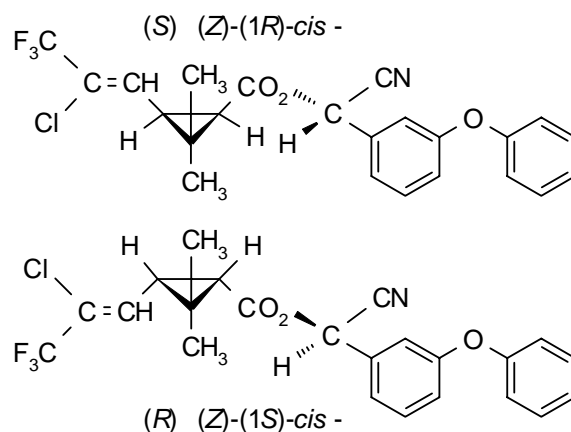
Lambda-Cyhalothrin

Pyrethroid

91465-08-6

C₂₃ H₁₉ Cl F₃ NO₃

Structural Formula



Molecular weight

449.9

Vapour Pressure

2 X10⁻⁴ mPa @20°C

K_{ow} log P

7 @ 20°C

Acute oral LD₅₀, Male rat

79 mg/kg



3. PHYSIOCHEMICAL PROPERTIES OF THE PRODUCT:

Assay:	"Lambda-Cyhalothrin" 50 ± 3 g/L
Appearance:	Clear yellow liquid free of visible impurities
Odour:	Slight Aromatic
Density:	0.900 ± 0.006
Flash Point:	>40°C
Water contents:	<2.0 g/Kg
Acidity as H ₂ SO ₄ :	<0.5 g/Kg
Solubility in water	Form emulsion

4. MODE OF ACTION:

Lamdoc[®] 50EC is a fast acting non-systemic pyrethroid insecticide with contact and stomach action, and repellent properties. It gives rapid knockdown and long residual activity.

5. PHYTOTOXICITY:

Lamdoc[®] 50EC is not phytotoxic if used as recommended.

6. COMPATIBILITY:

Lamdoc[®] 50EC is compatible with other pesticides. However, small mixture should be made and tried before mixing large quantities.

7. USES:

Lamdoc[®] 50EC is used for the control of a wide spectrum of insect pests, e.g. aphids, beetles, thrips, *Lepidoptera* larvae, *Coleoptera* larvae and adults, etc. in cereals, ornamentals, potatoes, vegetables and other crops. Provide good control of insect-borne plant viruses



8. APPLICATION:

Lamdoc[®] 50EC is applied with regular knapsack, gun or boom sprayers after being diluted with water

The following table can be used as a guide for the application of **Lamdoc**[®] 50EC

Recommendations for Use

Crop	Pest	Application Rate	PHI
Cereals & Forages	Aphids, Caterpillars & stem borers	35-50 ml / 100 L of water	21 days (alfalfa 15 days)
Fruit Trees	Aphids, Caterpillars, whitefly, scale insects, thrips & Leafminers.	35-50 ml / 100 L of water	28 days
Vegetables	Aphids, Caterpillars, Thrips, whitefly, scale insects, weevils, & Leafminers	35-50 ml / 100 L of water	10 days

9. HANDLING, STORAGE AND TRANSPORTATION:

Lamdoc[®] 50EC should be transported its original labeled, tightly closed container and stored in a dry well ventilated store at room temperature and away from direct sunlight. It should also be kept away from children, animals, food, feed and drinks and unauthorized personnel. Personnel involved in handling this material should wear protective gloves, clean protective clothing and a facemask.