



cerexagri

SHAKE WELL BEFORE USING

KNOX OUT[®] 2FM

Flowable Microencapsulated Insecticide

For Indoor Use in Commercial and Residential Buildings

For Specific Outdoor Uses,

Including Ornamentals and Lawns Around the Home Only

For Commercial/Institutional Use Only

This product must not be used on golf courses or sod farms.

ACTIVE INGREDIENT:

Diazinon: O,O-Diethyl O-(2-isopropyl-6-methyl-4-pyrimidinyl) phosphorothioate 23.0%

OTHER INGREDIENTS: 77.0%

TOTAL 100.0%

Contains 2 pounds diazinon per gallon.

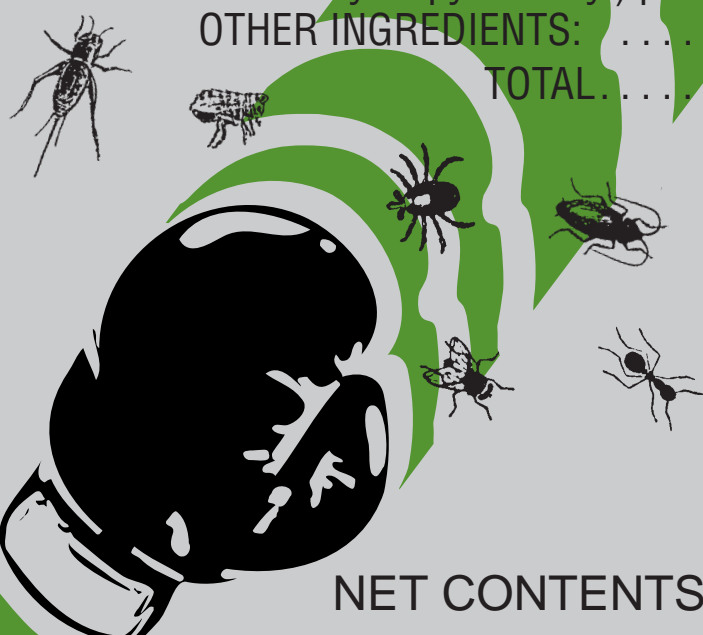
U.S. Patents 3,429,827 and 3,577,515.

EPA Registration No. 4581-335

EPA Establishment No. 1812-GA-3

KEEP OUT OF REACH OF CHILDREN

CAUTION



NET CONTENTS _____

Cerexagri, Inc.

2000 Market Street, Philadelphia, PA 19103

1 800-438-6071 • www.cerexagri.com

GENERAL INFORMATION

KNOX OUT 2FM is a flowable microencapsulated formulation containing 2 pounds diazinon per gallon.

It is to be used for residual pest control in and around buildings including, but not limited to, homes, apartments, stores, hospitals (except in patient rooms when occupied), interiorscapes, nursing homes, manufacturing plants, warehouses, schools (except classrooms in use), restaurants, hotels, motels, food processing plants, livestock housing (except dairy barns, milk rooms, and poultry houses), and on vessels, aircraft (do not use in aircraft cabins), boats, ships, rail cars, buses, trucks, and trailers.

KNOX OUT 2FM can be sprayed on most surfaces which will not be damaged or stained by water. Under conditions of proper application, KNOX OUT 2FM will not leave a visible deposit. However, if unevenly applied or sprayed to run-off, a visible deposit may occur on some dark surfaces and may be wiped off with a wet cloth or sponge.

Due to its controlled-release nature, KNOX OUT 2FM gives excellent residual control of the following pests: ants, aphids, armyworms, boxelder bugs, brown dog ticks, carpenter ants, carpenter bees, carpet beetles, centipedes, cluster flies, cockroaches, confused flour beetles, crickets, cutworms, digger wasps, earwigs, elm-leaf beetles, firebrats, fleas, flies, fungus gnat larvae, grain weevils, lawn billbugs, lawn chinch bugs, leafhoppers, leafminers, mealybugs, millipedes, mites, psocids, red flour beetles, rice weevils, sawtoothed grain beetles, scale insects, scorpions, silverfish, sowbugs, spiders, thrips, whitefly (suppression), white grubs, warehouse beetles and yellowjackets. (NOTE: effective knockdown may take up to 24 hours after application). See directions for specific instructions to control pests.

Unless directions specify otherwise, application should be made as a fine or coarse spray. Use of KNOX OUT 2FM in a pin stream is not recommended when applying to carpet, oil-based paints or stains, or wallpaper.

DIRECTIONS FOR USE

It is a violation of Federal law to use this product in a manner inconsistent with its labeling.

Thoroughly wash out spray equipment before using KNOX OUT 2FM. Shake concentrate well before diluting.

Do not apply this product through any type of irrigation system.

KNOX OUT 2FM MIXING INSTRUCTIONS

Unless otherwise directed, dilute KNOX OUT 2FM with water to make a 0.5% to 1% spray** as indicated below:

Amount* of KNOX OUT 2FM to use for:

Amount of Finished Spray	0.5% Spray**	1% Spray**
1 Pint	0.3 fl. oz.	0.6 fl. oz.
2 Pints	0.6 fl. oz.	1.2 fl. oz.
4 Pints	1.2 fl. oz.	2.5 fl. oz.
1 Gallon	2.5 fl. oz.	5.0 fl. oz.
2 Gallons	5.0 fl. oz.	10.0 fl. oz.
3 Gallons	7.5 fl. oz.	15.0 fl. oz.
10 Gallons	25.0 fl. oz. (1.6 pints)	50.0 fl. oz. (1.6 quarts)

*1 Tablespoon = 0.5 fl. oz.

**Active ingredient basis

When diluting, first add approximately half of the water to the spray tank, then add the required quantity of KNOX OUT 2FM, and finally add the rest of the water. Occasionally agitate sprayer during use to assure even coverage. Shake or re-agitate sprayer before use if application is interrupted.

Do not use this formulation with oil.

IF SPRAY SCREENS ARE USED, THEY SHOULD BE 50 MESH OR LARGER.

INDOOR USE GENERAL INFORMATION AND PRECAUTIONS

Repeat treatments of KNOX OUT 2FM should be made as needed, but generally will not be necessary more than once every 60 days. Use the low rate for light infestations or monthly maintenance sprays, and the higher concentration for heavy infestation, initial clean out, or where insecticide resistance is suspected.

Precautions: Do not use this product indoors as an overall surface spray or as a space spray; take care not to introduce this product into the air during application. Use only in well-ventilated areas. Do not apply where children are likely to frequently contact treated surface. Remove or cover fish bowls and remove pets before application. Do not treat pets with this product. Do not allow children or pets in treated areas until spray has dried. Do not apply this product in any rooms while occupied by patients, the elderly or infirm. Do not apply to classrooms when in use. In institutions (including but not limited to office buildings, museums, libraries, and sports facilities), do not spray this product

when occupants are present in the immediate area. Do not apply directly to conduits, motor housings, or electrical switch boxes. Do not apply to areas, surfaces or utensils which will contact food or feed. Exposed food should be covered or removed during treatment. All food processing surfaces and utensils should be covered during application or thoroughly washed with soap and water before use. If clothing is sprayed during application, remove clothing immediately after spraying, wash affected body areas with soap and water and launder clothing before wearing again.

Indoor pests: ants, brown dog ticks, carpenter ants, carpenter bees, carpet beetles, centipedes, cockroaches, crickets, earwigs, firebrats, fleas, flies, mealybugs, millipedes, psocids, scorpions, silverfish, sowbugs, spiders.

INDOOR USE EXCEPT FOOD AND FEED HANDLING ESTABLISHMENTS

Including, but not limited to households, apartments and non-food areas of offices, schools (except classrooms while in use), libraries, hospitals (except patient rooms while occupied), museums and sports facilities.

(See "Food and Feed Handling Establishments" for special directions when applying this product in food handling or serving areas in non-residential buildings).

See the following for pests requiring specific applications.

Ants—Make spot applications of 0.5% to 1% KNOX OUT 2FM as a crack and crevice spray to wall voids, crawl spaces, cracks and crevices, and similar hiding or habitation areas. Apply to areas where these pests may crawl or enter the premises. Repeat application as necessary.

Carpenter Ants—Make spot applications of 0.5% to 1% KNOX OUT 2FM as a crack and crevice spray to wall voids and crawl spaces. Where possible, treat ant nest or infested wood directly. Repeat application as necessary.

Cockroaches and Silverfish—Make spot applications of KNOX OUT 2FM as a 0.5% to 1% crack and crevice spray around water pipes, storage areas, behind and under cabinets, refrigerators, sinks, stoves and in similar areas where these insects hide.

Crickets—Make spot applications of 0.5% to 1% of KNOX OUT 2FM as a crack and crevice spray behind and under cabinets and appliances, and other hiding places. Areas around doors and water pipes should be treated to help prevent crickets from entering the premises. Repeat application as necessary.

Flies—Make spot applications of 1% KNOX OUT 2FM as a crack and crevice spray to window frames, screens, trash cans, and similar areas where these pests may congregate. Repeat application as necessary.

Fleas and Brown Dog Ticks—Apply KNOX OUT 2FM as a 1% fine spray only as a spot treatment to pet beds and resting quarters, adjacent cracks and crevices. Old bedding of pets should be replaced with clean, fresh bedding after treatment. Do not spray animals with this product.

Stored Product Pests—For control of exposed stages of sawtoothed grain beetles, confused flour beetles, red flour beetles, rice weevils, grain weevils, warehouse beetles:

Make spot and/or crack and crevice treatment of 0.5% to 1% KNOX OUT 2FM to localized areas including shelves, cupboards, walls and floors, where food products suspected of being infested are stored. Food should be removed or covered during treatment. Remove shelving paper before spraying. Do not replace food packages until spray has dried. Cover shelves with shelving paper. This treatment is supplemental to good housekeeping, since it will have no effect on insects breeding within packaging. Infested food packaging should be destroyed.

INDOOR USE FOOD AND FEED HANDLING ESTABLISHMENTS

Places other than private residences, in which food or feed is held, processed, prepared or served (includes restaurants, canneries, bakeries, and food processing plants). This product may be applied in the food/feed areas and the non-food/non-feed areas of these establishments.

This product is authorized by USDA for use in Federally inspected meat and poultry plants.

Apply either as a limited spot or crack and crevice treatment as directed below.

Food/Feed Areas of Food/Feed Handling Establishments—Includes areas for receiving, serving, storage, (dry, cold, frozen, raw), preparing (cleaning, slicing, cooking, grinding), serving (when food is exposed and facility is in operation), packaging (canning, bottling, wrapping, boxing), edible waste storage, and enclosed processing systems (mills, dairies, and systems for processing edible oils and syrups).

APPLICATION OF THIS PRODUCT IN THE FOOD/FEED AREAS OF FOOD HANDLING ESTABLISHMENTS, OTHER THAN AS A CRACK AND CREVICE TREATMENT OR LIMITED SPOT TREATMENT, IS NOT PERMITTED.

Non-Food/Non-Feed Areas of Food/Feed Handling Establishments—Includes garbage rooms, lavatories, floor drains (to sewers), entries and vestibules, offices, locker rooms, machine rooms, boiler rooms, closets, and storage areas (after canning or bottling).

ake spot and/or crack and crevice applications of KNOX OUT 2FM using a 0.5% 1% spray, treating localized areas (such as around water pipes, beneath cabinets, storage areas and similar areas) where cockroaches, ants, spiders, and silverfish hide or enter. Do not use as a space spray or allow spray to contact food, food processing surfaces, or utensils. Make applications using low pressure.

IMITED SPOT TREATMENT

mit spot treatment to floor surface where pests have been seen or where they are suspected of hiding. Limit the sum of individual spot treatments to an area no larger than 20% of the floor surface area. Any individual spot treatment must not exceed 2 square feet.

Do not apply to areas, surfaces, or utensils which will come in contact with food. Take extreme care to avoid contamination of food or food contact surfaces or introducing the material into the air.

RACK AND CREVICE TREATMENT

Apply spray in small amounts directly into cracks and crevices using equipment capable of delivering a pin stream of insecticide. Includes expansion joints, spaces between equipment and floors, and openings leading to voids and hollow spaces walls, equipment legs and bases.

Do not use this product in conduits, motor housings, and electrical switch boxes.

USE ON ORNAMENTALS INDOORS AND OUTDOORS

Use on ornamentals outdoors around the home only. For indoor use on interiors of commercial buildings. Follow indoor or outdoor use precautions, as applicable.

For control of ants, aphids, boxelder bugs, carpenter ants, carpenter bees, centipedes, cluster flies, crickets, earwigs, elmleaf beetles, flies, fungus gnat larvae, aphid miners, mealybugs (citrus, stem and root), millipedes, mites, scale insects, ororpions, silverfish, sowbugs, spiders, and thrips:

Apply KNOX OUT 2FM to the ornamentals listed below at a rate of 0.5 to 1.0 fl. oz. per gallon of water (3-6 pints/100 gallons). Treat when insects appear. Use the higher rate for heavy infestations. Repeat applications as necessary.

African Violets	Floss Flower	Pineapple Guava
Agapanthus	Friendship Plant	Pittosporum
Geranium	Gardenia	Podocarpus
Umbelliferous Plant	Gazinia	Poinsettia
Yucca	Geranium	Primrose
Rowan	Golddust	Privet
Zalea	Honeysuckle	Pyracantha
Egonia	Hydrangea	Raphiolepis
Hardy's Nest Fern	Ilex	Rhododendron
Oxalis Fern	Impatiens	Rose
Spotted Geranium	Ivy	Salvia
Actus	Jade Plant (Crassula)	Sansevieria
Alendula	Japanese Aralia	Scarlet Sage
Amelia	Juniper	Snake Plant
Elosia Jewel Box	Leucothoe	Snapdragon
Hrysanthemum	Lilac	Spider Plant
Rockscumb	Malus	Star Jasmine
Oleus	Maranta	Strawflower
Hotoneaster	Marigold	Tahitian Bridal Veil
Apple Myrtle	Nandina	Velvet Plant (Gynura)
Lotus	Oleander	Verbena
Aisy	Orchid	Vivia
Anthus	Osmanthus	Wandering Jew
Dogwood	Pachysandra	Wax Plant
Scalonia	Periwinkle	Zinnia
Uonymus	Petunia	
At Topped Sedum	Photinia	

Do not use on Bella Palm, Dracaena, Hoya, Maidenhair Fern, Neath and Prayer Plant.

KNOX OUT 2FM has demonstrated excellent plant safety; however, all varieties of the plants listed above have not been tested. When treating large numbers of ants of a single variety, spray a few plants and observe for phytotoxicity prior to full scale application.

KNOX OUT 2FM will not control some organophosphate resistant ornamental ant pests.

OUTDOOR USE

Precautions: Wear long-sleeved shirt and long-legged pants when spraying. Spray with the wind to your back. Do not spray on windy days. If clothing becomes wet from spray during use, remove clothing after spraying, wash affected body areas thoroughly with soap and water and launder clothing before wearing again. Do not apply this product through any type of irrigation system. This product is highly toxic to bees exposed to direct treatment or to residues on blooming plants. Do not apply this product or allow it to drift to blooming plants if bees are visiting the treatment area. Refer to Environmental Hazards section for measures to protect birds and wildlife. Avoid overlapping of sprays.

Do not apply this product to food crops.

Outdoor pests: ants, armyworms, boxelder bugs, brown dog ticks, carpenter ants,

carpenter bees, centipedes, clover mites, cluster flies, cockroaches, crickets, cutworms, digger wasps, earwigs, elmleaf beetles, fleas, flies, lawn billbugs, lawn chinch bugs, leafhoppers, millipedes, psocids, scorpions, spiders, white grubs, yellowjackets.

For Control of Nuisance Pests Outdoors

Ants, boxelder bugs, brown dog ticks, carpenter ants, carpenter bees, centipedes, clover mites, cluster flies, cockroaches, crickets, digger wasps, earwigs, fleas, flies, millipedes, scorpions, spiders.

Use a rate of 4-6 ounces KNOX OUT 2FM per 1,000 square feet in 3 gallons of water for the types of areas listed below. Do not spray ornamental plants at this rate (see Ornamentals section for specific directions and rate for use on those plants). Do not spray fruit or vegetable plants with this product.

Perimeter Treatment Around the Home Only

As a residual spray to help prevent infestations of the home by the pests listed above, treat a band (including bare soil, mulched, and grassy areas, but excluding ornamentals other than tree trunks) up to 10 feet wide around and adjacent to the home. When treating mulched and landscaped areas be careful to spray only the mulch and soil under and around ornamental plants. Infested unmaintained grassy or weedy areas in the treated perimeter should be sprayed thoroughly. Do not spray any food plants growing in the perimeter zone. Also, treat the building foundation to a height of 2-3 feet. Spray entranceways, walks, garbage cans, dumpsters, and into cracks and other places where insects can hide. KNOX OUT 2FM may be applied in compressed air equipment or power spray equipment. Apply as a coarse spray to thoroughly and uniformly wet the band area.

For control of pests on outdoor surfaces of home and other buildings (except dairy barns, milk rooms, and poultry houses)—Spray exterior surfaces, porches, screens, window frames, eaves, patios, garages, light fixtures, and other areas where pests such as flies and others listed above congregate or enter premises. For flies, begin treatments at the onset of fly season and repeat weekly during periods of heavy fly activity.

Application to Home Lawns

Apply as a coarse spray at a rate of 4-6 ounces KNOX OUT 2FM per 1,000 square feet of lawn in 3 gallons of water, or sufficient water for thorough coverage. For lawn chinch bugs, use higher rate for longer residual control and in lawns of dense growth. For digger wasps, apply at dusk when the wasps are not active. Spot spray anthills and runways and wasp ground nest openings. For grubs (such as Japanese beetle larvae, European chafer, Southern chafer), apply any time between late July and early October. For best grub control, water in thoroughly after application. Do not treat ornamentals at the lawn treatment rate.

Use In Livestock Housing—For control of flies in Barns and Animal Sleeping Quarters (except Dairy Barns, Milk Rooms and Poultry Houses):

Apply a 1% KNOX OUT 2FM spray to walls, window frames, and doors of livestock sheds, calf barns, hog barns, lofting sheds, and other farm buildings except dairy barns, milk rooms and poultry houses. Repeat applications as fly populations warrant.

Remove animals from buildings prior to treatment and keep animals out for 4 hours. Do not contaminate milk, feed, drinking water, or apply to animals or poultry.

USE FOR CONTROL OF YELLOWJACKETS

For the control of scavenger yellowjackets (*Vespa pensylvanica*, *V. vulgaris*), apply KNOX OUT 2FM as a bait as described on the following.

BAIT PREPARATION AND DISPENSER DISTRIBUTION

To about 3 ounces (6 level tablespoons) of the preferred bait, add 1/2 teaspoon of KNOX OUT 2FM. This amount of bait is sufficient for one dispenser. Do not mix more than the recommended amount of KNOX OUT 2FM to the desired bait, or yellowjacket avoidance may occur.

Mix only enough bait for immediate use in the desired number of dispensers. Add bait to each dispenser until it reaches about midway between the container bottom and the access holes. Hang the dispenser, preferably in a sunny location, from a tree limb or other suitable support around the periphery of the area to be protected. For best results, use 3 to 4 dispensers per acre, or place them about 100 feet apart. Always hang dispensers out of reach of children and pets.

REAPPLICATION AND BAIT LONGEVITY

Replenish dispensers with fresh bait as long as yellowjackets are present. Unused bait will probably be unattractive to yellowjackets after 2 days, especially if temperatures are above 90°F. If possible, stir bait once each day before yellowjacket activity begins in order to bring fresh bait to the surface.

If pest yellowjackets reappear in late summer, retreat the area. Properly dispose of any unused or stale bait. Do not reuse dispensers for any other purpose.

BAIT ATTRACTIVENESS

Attractiveness of baits to yellowjackets is highly variable and is dependent on such factors as stage of reproductive cycle, type of bait, quality of bait, etc. Before using KNOX OUT 2FM it is recommended that bait preference be determined by placing several candidate baits in a location where yellowjacket activity is occurring. By observing the visitation frequency for a short time, preference will become apparent.

BAIT SOURCES AND SUGGESTIONS

KNOX OUT 2FM is recommended for use with any of the baits from the categories listed. In order to maximize efficiency, particles of the selected bait should be reduced to $\frac{1}{8}$ inch diameter or smaller. If any bait is dry after preparation, add sufficient water to increase the total moisture content.

Canned Pet Foods—Cat food containing fish is generally the most attractive bait, although meat and poultry products are suitable.

Fresh Meat, Fish, and Poultry—Hamburger or salmon is generally the most attractive bait. The selected product should be cooked until the red color barely disappears. Some products, like red salmon, will retain a red color even after cooking. All traces of free grease should be removed.

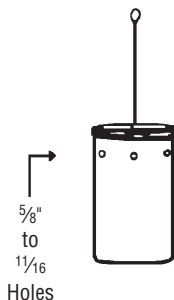
Canned Meat, Fish, Poultry, and Processed Meats—(ham, cold cuts, etc.)—These products are often very attractive to yellowjackets and need not be cooked.

DISPENSER MARKING

Mark dispenser with at least the following information: CAUTION. Contains bait mixed with KNOX OUT 2FM (diazinon), EPA Reg. No. 4581-335.

BAIT DISPENSER

In a four to six ounce nonfood container with a removable top, drill three to six holes $\frac{5}{8}$ " to $1\frac{1}{16}$ " in diameter around the top of container and two small holes (for attaching wire) in the top.



STORAGE AND DISPOSAL

Do not contaminate water, food or feed by storage or disposal.

STORAGE: Store in original container only, preferably in a locked storage area. Do not store in a manner where cross contamination with other pesticides, fertilizer, food or feed could occur. If spilled during storage or handling, soak up spillage with absorbent material and dispose of in accordance with Pesticide Disposal Instructions listed below.

PESTICIDE DISPOSAL: Wastes resulting from the use of this product may be disposed of on site or at an approved waste disposal facility.

CONTAINER DISPOSAL: Triple rinse container, then offer for recycling or reconditioning, or puncture and dispose of in a sanitary landfill, or by incineration, or, if allowed by state and local authorities, by burning. If burned, stay out of smoke.

WARRANTY AND DISCLAIMER

Cerexagri, Inc. warrants that this material conforms to the chemical description on the label and is reasonably fit for the purposes referred to in the Directions for Use, subject to the risks referred to therein. CEREXAGRI MAKES NO OTHER EXPRESS OR IMPLIED WARRANTY OF FITNESS OR MERCHANTABILITY OR ANY OTHER EXPRESS OR IMPLIED WARRANTY. IN NO CASE SHALL CEREXAGRI OR SELLER BE LIABLE FOR CONSEQUENTIAL, SPECIAL OR INDIRECT DAMAGES RESULTING FROM THE USE OR HANDLING OF THIS PRODUCT INCLUDING, BUT NOT LIMITED TO, LOSS OF PROFITS, BUSINESS REPUTATION, OR CUSTOMERS; LABOR COST; OR OTHER EXPENSES INCURRED IN PLANTING OR HARVESTING.

Cerexagri and seller offer this product and the buyer and user accept it subject to the foregoing conditions of sale and warranty which may be varied only by agreement in writing signed by a duly authorized representative of Cerexagri.

Cerexagri, Inc. is a wholly-owned subsidiary of ATOFINA Chemicals, Inc.

5-Z411S-05 H6 (11/00)

Made and Printed in the U.S.A.

PRECAUTIONARY STATEMENTS

HAZARDS TO HUMANS (AND DOMESTIC ANIMALS)

HARMFUL IF ABSORBED THROUGH SKIN. Avoid contact with skin, eyes or clothing. Avoid breathing spray mist. Use only in well ventilated areas. Wash thoroughly with soap and water after handling. Keep out of reach of children.

Do not apply to humans or pets. Do not allow children or pets to contact treated surfaces until spray has dried. Cover fish tanks prior to application.

Do not contaminate food, feedstuffs, or water supply. Food utensils such as spoons or measuring cups must not be used for food purposes after use in measuring pesticides. Do not contaminate food preparation surfaces, kitchen utensils, dishes, or food storage containers. All food contact surfaces and cooking utensils should be covered during treatment or thoroughly cleaned before using.

Do not spray where electrical short circuits might result, such as wall outlets, conduits, switch boxes or motor housings.

KEEP OUT OF REACH OF CHILDREN

CAUTION

FIRST AID:

IF SWALLOWED, drink 1 or 2 glasses of water and induce vomiting by touching back of throat with finger. Do not induce vomiting or give anything by mouth to an unconscious or convulsing person.

IF ON SKIN, remove contaminated clothing immediately and wash skin with soap and water. Get medical attention.

IF IN EYES, wash thoroughly with water for at least 15 minutes. Call a physician.

NOTE TO PHYSICIAN: The active ingredient of KNOX OUT 2FM is an organophosphate cholinesterase inhibitor. Atropine is antidotal only if symptoms of cholinesterase inhibition are present. 2-PAM is also antidotal and may be administered, but only in conjunction with atropine. Morphine is contraindicated.

ENVIRONMENTAL HAZARDS

This pesticide is highly toxic to birds, fish, and other wildlife. Birds, especially waterfowl, feeding or drinking on treated areas may be killed. Because of the migratory habits of Atlantic Coast waterfowl, do not apply this product to lawns in Nassau County, New York, between November 1 and May 20. Do not exceed maximum permitted label rates. Rates above those recommended, significantly increase potential hazards to birds and waterfowl. Avoid overlapping of sprays. On lawns, if waterfowl (ducks or geese) can be expected in the treated area after treatment (except spot treatment), apply a minimum of $\frac{1}{4}$ inch of water immediately after spraying this product. Stop watering before puddling occurs. Keep out of lakes, streams, ponds, tidal marshes, and estuaries. Do not apply directly to water, to areas where surface water is present or to intertidal areas below the mean high water mark. Drift and runoff may be hazardous to aquatic organisms in neighboring areas. Shrimp and crab may be killed at application rates recommended on this label. Do not apply where fish, shrimp, crab, and other aquatic life are important resources. Do not contaminate water by cleaning of equipment or when disposing of equipment washwaters.

This pesticide is highly toxic to bees exposed to direct treatment or residues on blooming crops or weeds. Do not apply this pesticide or allow it to drift to blooming crops or weeds if bees are visiting the treatment area.